

GENERAL EDUCATION TRANSPORTATION SERVICES

Frequently Asked Questions (DRAFT 2/1/2011)

Over the next three years, yellow bus services for general education students attending elementary and middle schools will be reduced to minimize the use of general fund budget contributions for transportation, and remaining services will change to support our district strategic plan's commitments to access and equity. Students with IEPs that require transportation will not be impacted. This document describes proposed changes: what is changing, why it is changing, and when it will change.

COMMUNITY INPUT

How can I learn more and provide feedback?

1. Attend the *Transportation Workshop* at the **School Planning Summit**.
Saturday, February 12 8:30 am to 12:30pm
Everett Middle School 450 Church Street
2. **Ask your principal** for a *Transportation Services Feedback* form. Once you have completed the form return it to your school's main office.
3. **Visit our web site** www.sfusd.edu/enroll to review information and provide feedback online.

How will my feedback be taken into consideration?

All feedback received in February 2011 will be reviewed by SFUSD staff. Any changes to the vision for 2013 and/or routes for 2011 will be finalized and shared with the public by May 2011.

What factors will you consider when reviewing my feedback?

We will consider the Board of Education's strategic plan commitments and budget reduction goals.

CHANGES FOR 2011-12

How did you decide which changes to make for the 2011-12 school year?

We developed a vision for 2013-14 that would support the Board of Education's strategic plan commitments and the budget reduction goals.

We then identified ways to cut six buses while minimizing the number of families impacted in August 2011. We looked at:

- avoiding changes to schools' start and end times (bell schedule) for fall 2011;
- maintaining as many stops as possible in areas of the city with the lowest average test scores (CTIP1);
- maintaining as many stops as possible to after school programs; and
- maintaining as many stops as possible with high ridership.

What transportation services will change in 2011?

Based on the criteria, the following 11 schools will lose general education transportation services in 2011.

- Chavez
- Garfield
- Grattan
- Key
- Marshall
- Miraloma
- Parker
- Peabody
- Sunset
- Sutro
- Yick Wo

Based on the criteria, the following 4 schools will have their general education transportation services reduced, but will keep transportation from areas of the city with the lowest average test score and stops to after school.

- Alice Fong Yu
- Clarendon
- Lilienthal
- Rooftop

Additional information is provided in Appendix A.

We propose to keep all other existing general education transportation services in place for the 2011-12 school year. However, if all the reductions above are not made this will impact service on other routes.

How many current riders will be impacted by the changes at these 15 elementary schools in 2011?

Based on November 2010 counts at each bus stop and the matriculation of about 20% of current riders who are in 5th grade, approximately 288 current riders may lose yellow bus services in 2011. This is about 9% of all current riders.

Will any new general education transportation services be established by August 2011?

We are exploring the possibility of adding service from Treasure Island to Chin and Sherman in 2011. We will definitely provide these services by 2012.

Will middle schools experience any changes to general education transportation services in 2011?

At this time we do not expect general education transportation services for middle schools to change in 2011. Changes for 2012 will be determined once elementary to middle school feeder patterns are established.

SUPPORT FOR FAMILIES

What support will be available for families losing yellow bus service in 2011?

Staff from Child Development Programs, After School Programs, and the Educational Placement Center will work together with principals to support families.

Once we have identified families who will be impacted next year, we will:

- help families explore after school options available at their elementary school or at a nearby Child Development Program;
- assist families who may wish to enroll in a different elementary school for 2011;
- share information about alternative transportation options.

What are some alternatives to yellow bus transportation?

- **Safe Routes to School** provides opportunities at 15 of our elementary schools to make walking and bicycling to school safer and more accessible.

Some parent initiated alternatives include:

- Walking School Buses
- Bicycle Trains

For more information visit: www.sfsaferoutes.org

- **511 School Pool Matching** is a free service that helps parents share the responsibility of getting children to school by matching parents with similar school trips. www.schoolpool.511.org

- **MTA/MUNI** (www.sfmta.com)

BUDGET REDUCTIONS

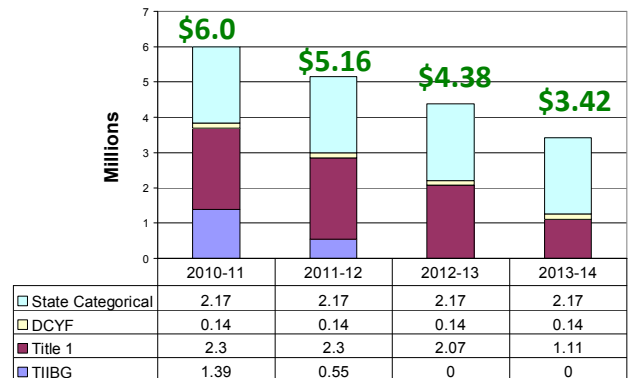
What is the current budget for general education transportation?

| Current Funding | Amount |
|-------------------------|----------------------|
| State Categorical | \$2.17 million |
| TIIBG (Consent Decree) | \$1.39 million |
| DCYF (field trips only) | \$0.14 million |
| Title 1 | \$2.30 million |
| Total funds | \$6.0 million |

- State Categorical funds can only be spent on transportation.
- Under current NCLB law 20% of Title 1 funds must be dedicated to transportation or Supplemental Education Services tutoring for students attending Program Improvement schools.
- DCYF is for field trips, not daily transportation.
- TIIBG funds can be used for other general fund purposes.

What are the budget reduction goals for general education transportation?

The goal is to minimize the use of the general fund budget contributions to general education transportation over the next three years.



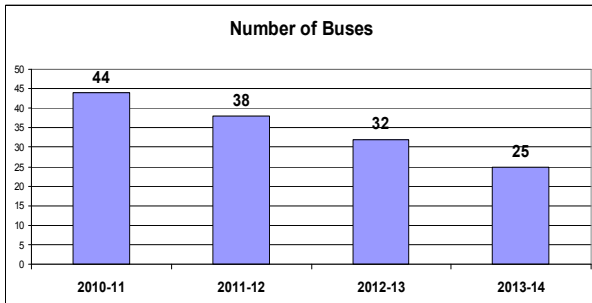
These budget reduction goals assume:

1. State Categorical funds will continue at the current rate.
2. Title 1 funds will continue at the current rate and
 - a. By 2013-14 NCLB will be reauthorized and funds can be repurposed for uses other than transportation and Supplemental Education Services,
 - or
 - b. 20% of Title 1 funds must continue to be dedicated to transportation or Supplemental Education Services tutoring, and the Board wants to repurpose some Title 1 funds from transportation to expand Supplemental Education Services tutoring.

FUTURE VISION – FALL 2013

How do the budget reduction goals impact the future vision?

Each year for the next three years reductions in service will be aligned with the budget reduction goals. Today we use 44 buses for general education transportation services – by 2013 we will use 25 buses.



What factors were considered when developing the future vision for transportation services?

The future vision is designed to support the Board of Education's strategic plan commitments.

- Supporting choice in student assignment as a tactic for creating diversity.
- Providing reasonable access:
 - to English Learner pathways;
 - from areas of the city with the lowest average test scores (CTIP1) to city-wide schools and programs;
 - to attendance area schools.
- Minimizing the use of general fund budget contributions for transportation.

The future vision assumes:

1. middle school feeder patterns will be established and will require limited transportation;
2. after school services will be realigned and will require limited transportation; and
3. bell times may need to change to support the strategic use of limited buses.

What are the areas of the city with the lowest average test score (CTIP1) and which city-wide schools and programs will get transportation from these areas?

The areas of the city with the lowest average test score are illustrated in a map in Appendix B along with a list of the city-wide schools and programs.

Which elementary schools will have redesigned transportation services by 2013? (map of schools provided in Appendix C)

| Elementary School | Proposed area of the city that services may come from |
|-------------------|--|
| 1. Alice Fong Yu | Mission, Western Addition |
| 2. Alvarado | Mission, Tenderloin, Western Addition |
| 3. Bryant | To be determined |
| 4. Carmichael | Tenderloin, Treasure Island |
| 5. Carver | To be determined |
| 6. CEC | Excelsior, Ingleside, Vis Valley |
| 7. Chin | Treasure Island |
| 8. CIS@DeAvila | Chinatown, Potrero, Tenderloin, Treasure Island |
| 9. Clarendon | Bayview, Mission, Vis Valley, Western Addition |
| 10. Cobb | To be determined |
| 11. Drew | To be determined |
| 12. Fairmount | Bayview, Vis Valley |
| 13. Flynn | Potrero, Treasure Island |
| 14. Harte | To be determined |
| 15. Lakeshore | Bayview, Mission |
| 16. Lau | Tenderloin, South of Market, Mission |
| 17. Lawton | Mission, Vis Valley |
| 18. Lilienthal | Tenderloin, Western Addition |
| 19. Malcolm X | To be determined |
| 20. MEC | Bayview, Excelsior, Mission, Vis Valley |
| 21. Milk | Bayview, Mission |
| 22. Moscone | Chinatown, Ingleside, Excelsior, Vis Valley |
| 23. Monroe | Potrero |
| 24. Muir | To be determined |
| 25. Revere | Bayview |
| 26. Rooftop | Bayview, Potrero |
| 27. Sanchez | To be determined |
| 28. SF Community | Vis Valley |
| 29. SF Montessori | Tenderloin, Western Addition |
| 30. Sherman | Treasure Island |
| 31. Spring Valley | Tenderloin, Mission, South of Market, Western Addition |
| 32. Webster | Webster |
| 33. West Portal | Bayview, Mission, Vis Valley |

Why do some schools say "to be determined"?

By 2013 limited transportation will be designed to support the academic vision for historically under enrolled schools. It is unclear at this time which areas of the city transportation services will be from.

What process was used to design the proposed transportation routes?

These recommendations are designed to support the Board of Education's strategic plan commitments.

- Supporting choice in student assignment as a tactic for creating diversity.
- Providing reasonable access:
 - to English Learner pathways;
 - from areas of the city with the lowest average test scores (CTIP1) to city-wide schools and programs;
 - to attendance area schools.
- Minimizing the use of general fund budget contributions for transportation.

When will specific information about stops and times for routes be available?

We plan to confirm the specific routes (stops and times) for fall 2011 by May 2011.

The specific routes for 2012 will be confirmed by October 2011, and the 2013 routes will be confirmed by October 2012.

In the interim, we are naming the areas of the city that each school may receive transportation services from.

Is it possible to provide feedback on the recommendations before they are implemented?

Yes. We will gather feedback from school communities in February 2011, and this feedback will be incorporated before the specific routes for fall to 2011 are shared by May 2011. Any revisions to the future vision will also be shared by May 2011.

Visit www.sfusd.edu/enroll
to learn more and to
provide specific feedback.

Which elementary schools may have general education transportation phased out by 2013?

| Elementary School | Year services may be phased out? |
|--------------------|----------------------------------|
| 1. Alamo | 2012 or 2013 |
| 2. Argonne | 2012 or 2013 |
| 3. Buena Vista | 2012 or 2013 |
| 4. Chavez | 2011 |
| 5. Cleveland | 2012 or 2013 |
| 6. El Dorado | 2012 or 2013 |
| 7. Garfield | 2011 |
| 8. Glen Park | 2012 or 2013 |
| 9. Grattan | 2011 |
| 10. Hillcrest | 2012 or 2013 |
| 11. Key | 2011 |
| 12. Lafayette | 2012 or 2013 |
| 13. Marshall ES | 2011 |
| 14. McKinley | 2012 or 2013 |
| 15. Miraloma | 2011 |
| 16. New Traditions | 2012 or 2013 |
| 17. Ortega | 2012 or 2013 |
| 18. Parker | 2011 |
| 19. Parks | 2012 or 2013 |
| 20. Peabody | 2011 |
| 21. Redding | 2012 or 2013 |
| 22. Sheridan | 2012 or 2013 |
| 23. Starr King | 2012 or 2013 |
| 24. Stevenson | 2012 or 2013 |
| 25. Sunset | 2011 |
| 26. Sutro | 2011 |
| 27. Taylor | 2012 or 2013 |
| 28. Tenderloin | 2012 or 2013 |
| 29. Ulloa | 2012 or 2013 |
| 30. Vis Valley ES | 2012 or 2013 |
| 31. Yick Wo | 2011 |

Why are services being phased out at these schools?

We have to reduce the transportation budget by 44% over the next three years; this requires reducing the bus fleet from 44 buses to 25 buses. In addition, we need to redesign services to align them with the Board's current priorities; existing services were designed in the 1980s to support the Consent Decree. We identified the services needed to support these two goals (reducing the budget and aligning services with the Board's strategic plan commitments). Unfortunately given our budget constraints we are unable to maintain services for all schools.

APPENDIX A

Proposed Service Reductions for 2011

Phasing out transportation for eleven elementary schools in fall 2011.

Using data from the November 2010 bus stop counts, and taking into account that about 20% of riders are in 5th grade, we estimate that the changes will impact about 216 students currently using transportation services to attend one of these eleven schools.

The following table indicates the total number of riders based on November 2010 counts at each bus stop.

| School | Total # Riders | # to CDC | # to private after school | # to CTIP 1 |
|---------------------|----------------|-----------|---------------------------|-------------|
| Chavez/ Marshall | 16 | 0 | 5 | 0 |
| Garfield | 62 | 8 | 38 | 10 |
| Grattan | 29 | 0 | 27 | 1 |
| Miraloma | 14 | 0 | 0 | 7 |
| Parker | 4 | 0 | 0 | 4 |
| Key | 6 | 0 | 0 | 0 |
| Sunset | 43 | 0 | 0 | 2 |
| Sutro/ Peabody | 17 | 0 | 16 | 1 |
| Yick Wo | 79 | 0 | 54 | 4 |
| Total | 270 | 16 | 140 | 29 |

In 2011, Alice Fong Yu, Clarendon, Lilienthal, and Rooftop will lose some stops. They will maintain all stops in areas of the city with the lowest average test scores (CTIP1) and all stops to after school in 2011.

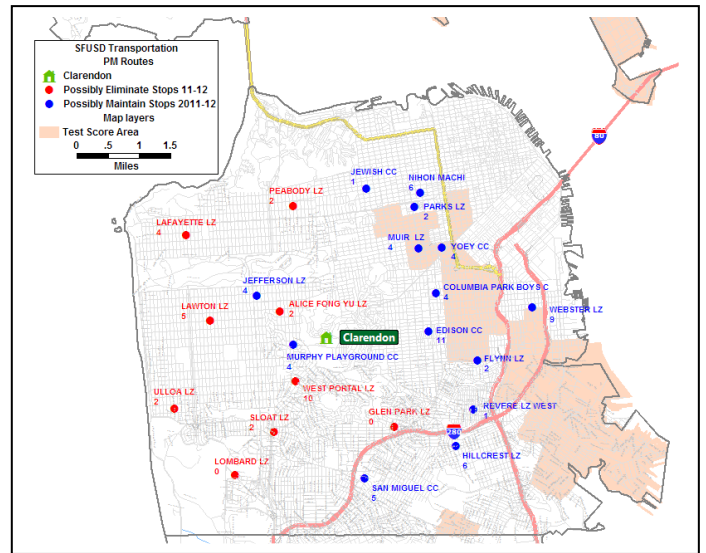
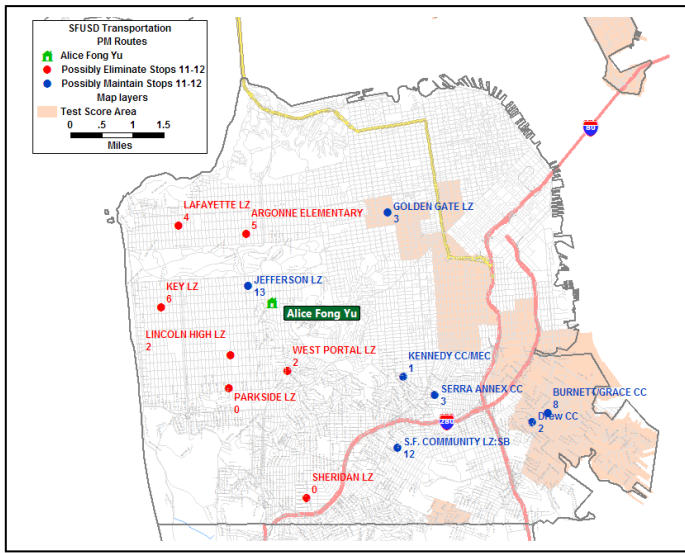
Using data from the November 2010 bus stop counts, and taking into account that about 20% of riders are in 5th grade, we estimate that the changes will impact about 72 of the 330 students currently using transportation services to attend one of these four schools.

The maps on the next page illustrate some of the stops that may be phased out in 2011. The table below is a snapshot of the current number of riders at stops that may be phased out in 2011.

| School | # Riders | # to CDC | # to private after school | # to CTIP 1 |
|--------------|-----------|----------|---------------------------|-------------|
| AF Yu | 32 | 0 | 0 | 0 |
| Clarendon | 27 | 0 | 0 | 0 |
| Lilienthal | 15 | 0 | 0 | 0 |
| Rooftop | 16 | 0 | 0 | 0 |
| Total | 90 | 0 | 0 | 0 |

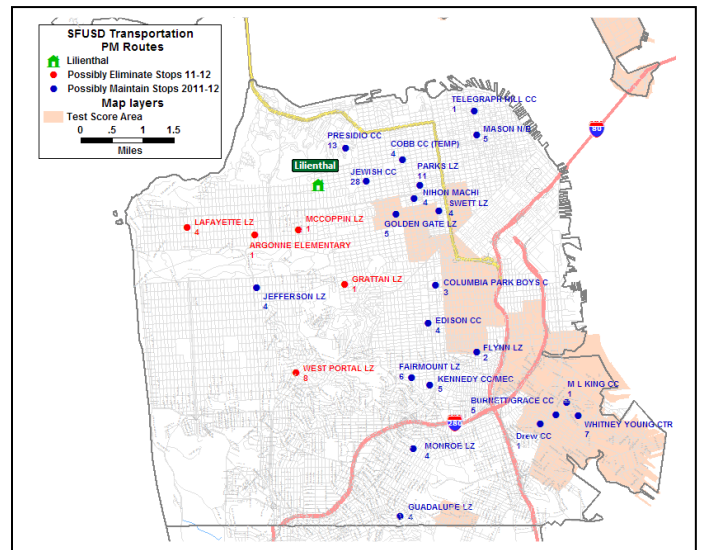
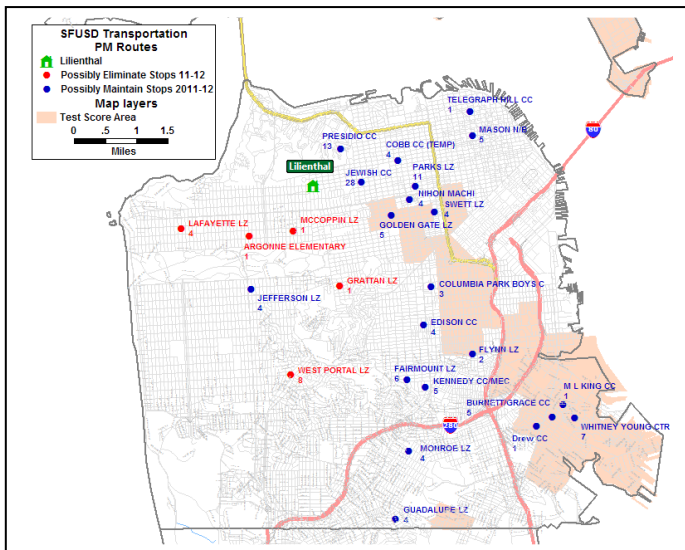
Alice Fong Yu

Clarendon



Lilienthal

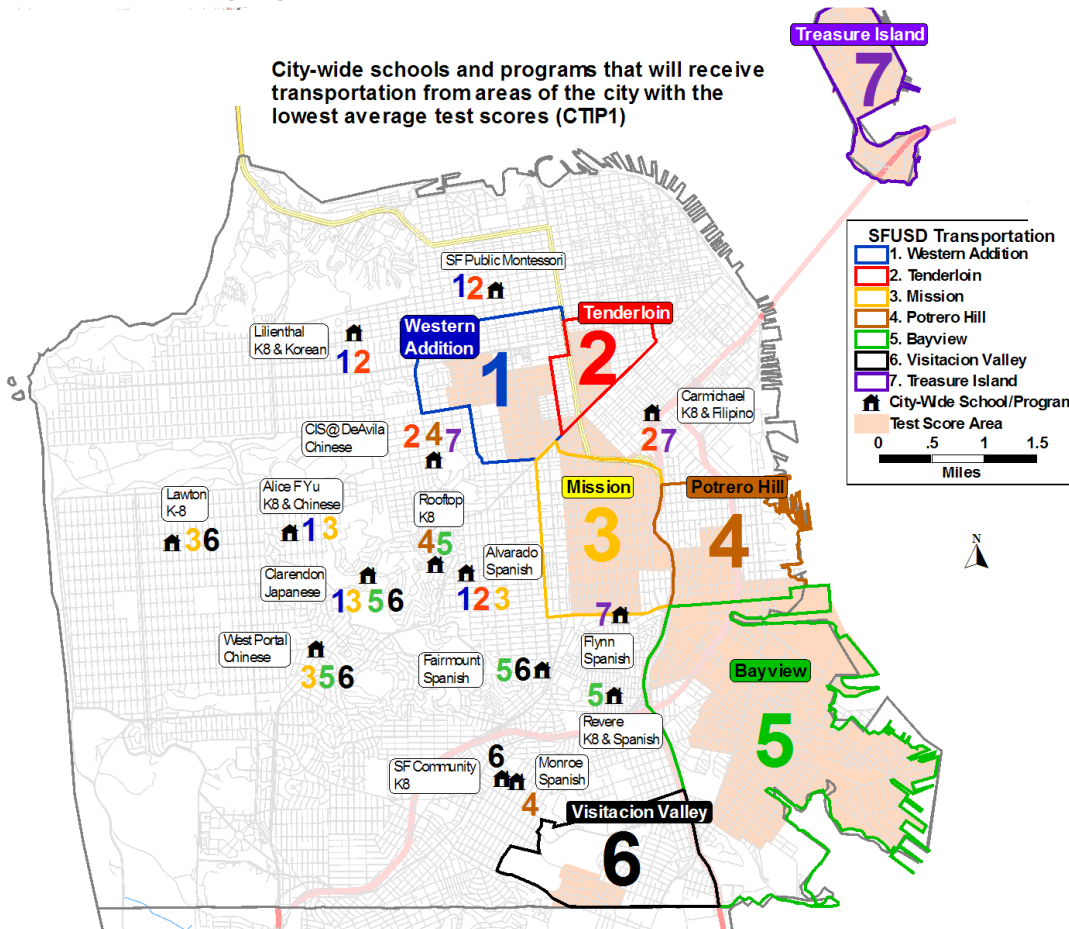
Rooftop



APPENDIX B

Proposed Services to City-Wide Schools from CTIP1 Areas by 2013

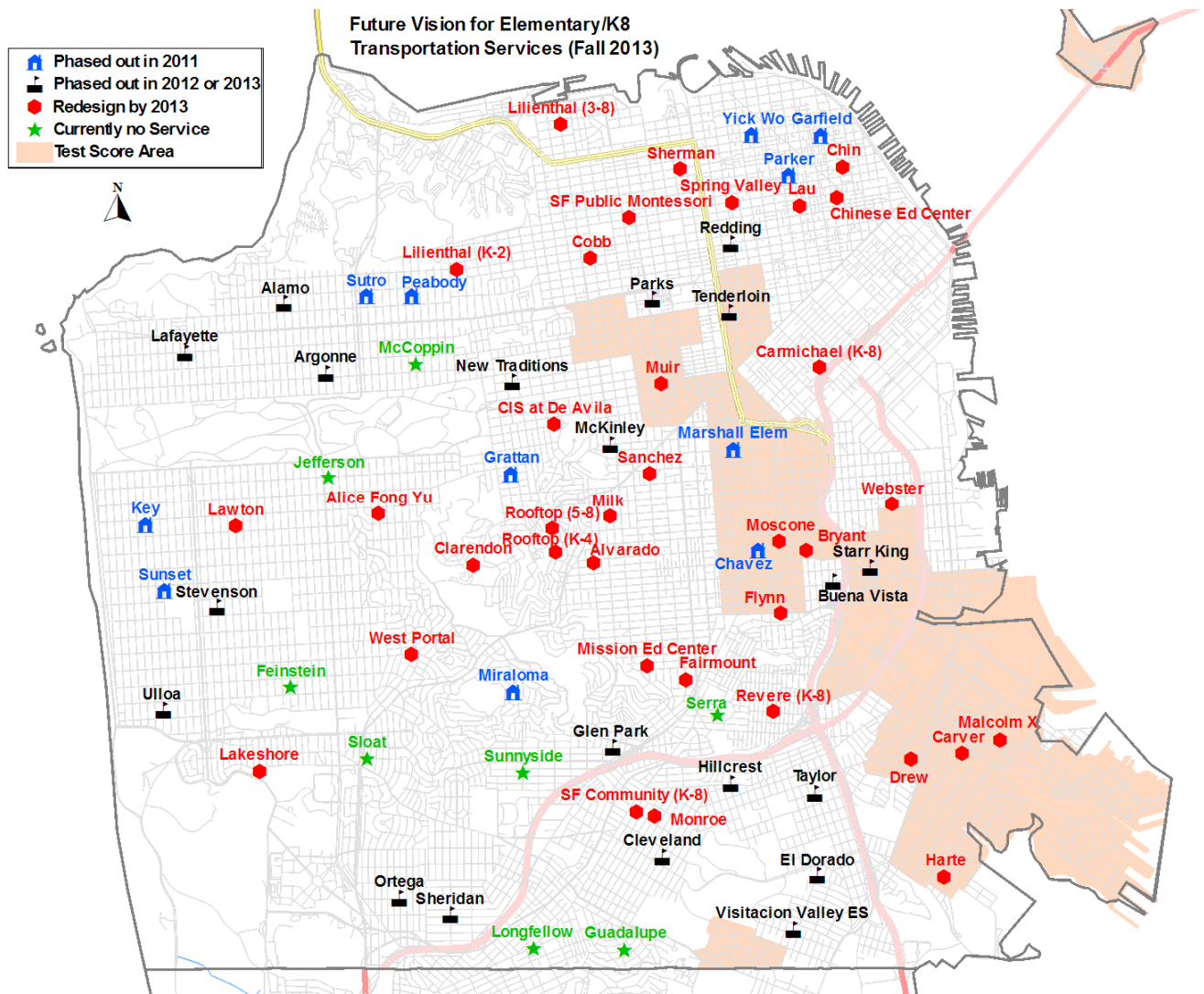
The following factors were used to identify the city-wide schools and programs that might receive transportation from areas of the city with the lowest average test scores (CTIP1), and to identify the specific CTIP1 area they might receive transportation from: (a) **proximity** to CTIP1 areas; (b) **minimizing ride times** for students, and (c) **access to at least one K8 and one language pathway from each CTIP1** transportation area.



| City Wide School/Program | 1. WAdd | 2. Tenderloin | 3. Mission | 4. Potrero | 5. BVHP | 6. VisValley | 7. Treasure Is |
|------------------------------|---------|---------------|------------|------------|---------|--------------|----------------|
| Alice Fong Yu – K8 & Chinese | X | | X | | | | |
| Alvarado – Spanish | X | X | X | | | | |
| Carmichael – K8 & Filipino | | X | | | | | X |
| CIS@DeAvila – Chinese | | X | | X | | | X |
| Clarendon – Japanese | X | | X | | X | X | |
| Fairmount – Spanish | | | | | X | X | |
| Flynn – Spanish | | | | | | | X |
| Lawton – K8 | | | X | | | X | |
| Lilienthal – K8 & Korean | X | X | | | | | |
| Monroe – Spanish | | | | X | | | |
| Revere – K8 & Spanish | | | | | X | | |
| Rooftop – K8 | | | | X | X | | |
| SF Community – K8 | | | | | | X | |
| SF Public Montessori | X | X | | | | | |
| West Portal – Chinese | | | X | | X | X | |

APPENDIX C

General Education Transportation Services by 2013



Visit www.sfusd.edu/Enroll for more information about transportation services.