

# **Board of Education Ad Hoc Committee on Student Assignment**

**December 8, 2008**

# Overview

## Purpose

- Provide a regular and public way for Board of Education commissioners to discuss the redesign of the student assignment system and get input from the community

## Staff Presentation

- Review Work to Date
- Outline Process and Schedule Moving Forward
- Present the Geographic Information System (GIS)

## Questions and Discussion

# Work to Date: Context

- The work to create a new student assignment system is linked intrinsically to the larger goals and objectives of the strategic plan
- The development of a new student assignment system will
  - help create the conditions to make social justice a reality
  - effectively support the work to
    - Diminish the predictive power of demographics
    - Build 21<sup>st</sup> century success for all students

# Work to Date: Approach

- Integrate the following initiatives into a single measurable and accountable project that is coherent and aligned with the District's strategic plan
  - Developing a new student assignment method
  - Implementing the LAU Action Plan (English learners)
  - Enhancing our portfolio of schools and programs
- Build on lessons learned
  - Community Advisory Committee on Student Assignment (2005)
  - Student Enrollment, Recruitment, and Retention (2007)
  - Beyond the Talk (2008)
  - PAC/PIC/Community Feedback (ongoing)

# Work to Date: Approach

- Board of Education
- Integrated Staff Teams

Superintendent, Deputy Superintendents, Educational Placement Center, School Operations and Instructional Support, Academics and Professional Development, Reform and Accountability, Research Planning & Accountability, Legal, Policy and Operations, Public Outreach and Communications, Facilities, Transportation

- Student Assignment Subcommittee (weekly)
- Program Placement Committee (weekly)
- Strategic Plan Working Groups (e.g., Lau, program design)

# Work to Date: Progress

- Assembled District teams
- Created web page
- Published timeline
- Engaged Omega Group to provide demographic consultation and planning
- Built database to explore options
  - Demonstration following presentation

# Work to Date: Progress

- Gathered data on enrollment capacities for all our schools (currently being verified)
- Started review of quality and access to:
  - Special education programs
  - Language programs for all students
  - Career/Technical Education Programs/Pathways
  - High school graduation requirements

# Work to Date: Progress

- Reviewed legal considerations
- Reviewed research
  - Assignment methods in other districts
  - Impact of school diversity on student achievement
  - Findings from prior community engagement activities

# Work to Date: Progress

- Partnered with community groups and created a Public Engagement and Input plan
  - Survey #1 (December 2008 – January 2009)  
Input on: customer service, outreach and recruitment
  - Community Focus Groups (January – March 09)  
Review and provide feedback on proposed models
  - Survey # 2 (February 2009)  
Input on: proposed models for student assignment
  - Aggressive outreach to ensure a broad cross-section of input

# Work to Date: Progress

- Noted considerations important to the community
  - Academic achievement
  - Community input
  - Desire for choice
  - Desire to consider neighborhoods/proximity
  - Equitable access to high quality schools and programs
  - Integration and diversity
  - Predictability and convenience
  - Program pathways and coherence
  - Resource allocation /costs (e.g., Transportation)
  - Transparency in the process
  - Verification of self-reported data

(gathered over the years via surveys and various community engagement activities)

# Process and Schedule Moving Forward

- Verify school capacities
- Identify assignment requirements articulated in the Lau Action Plan (enforceable by Federal Court)
- Analyze placement considerations for Special Education programs (consistent with Individuals with Disabilities Education Act - IDEA)
- Continue to review research
- Present demographic analysis to the Board of Education
  - Goodwin Liu, UC Berkeley Law Professor (January)

# Process and Schedule Moving Forward

- In collaboration with community groups, develop plan to implement focus groups and community feedback
  - Conveners
  - Facilitators
  - Discussion guide
  - Outreach materials
  - Schedule
  - Etc.

# Process and Schedule Moving Forward

- Develop student assignment options
- Conduct simulations and analyze outcomes
- Present options to the Board of Education
- Host community discussions / focus groups
- Adopt new assignment system after First and Second Reading (Board of Education)
- Develop implementation plan (training, communication, outreach, etc.)
- Launch new student assignment system

# Process and Schedule Moving Forward

Key Dates

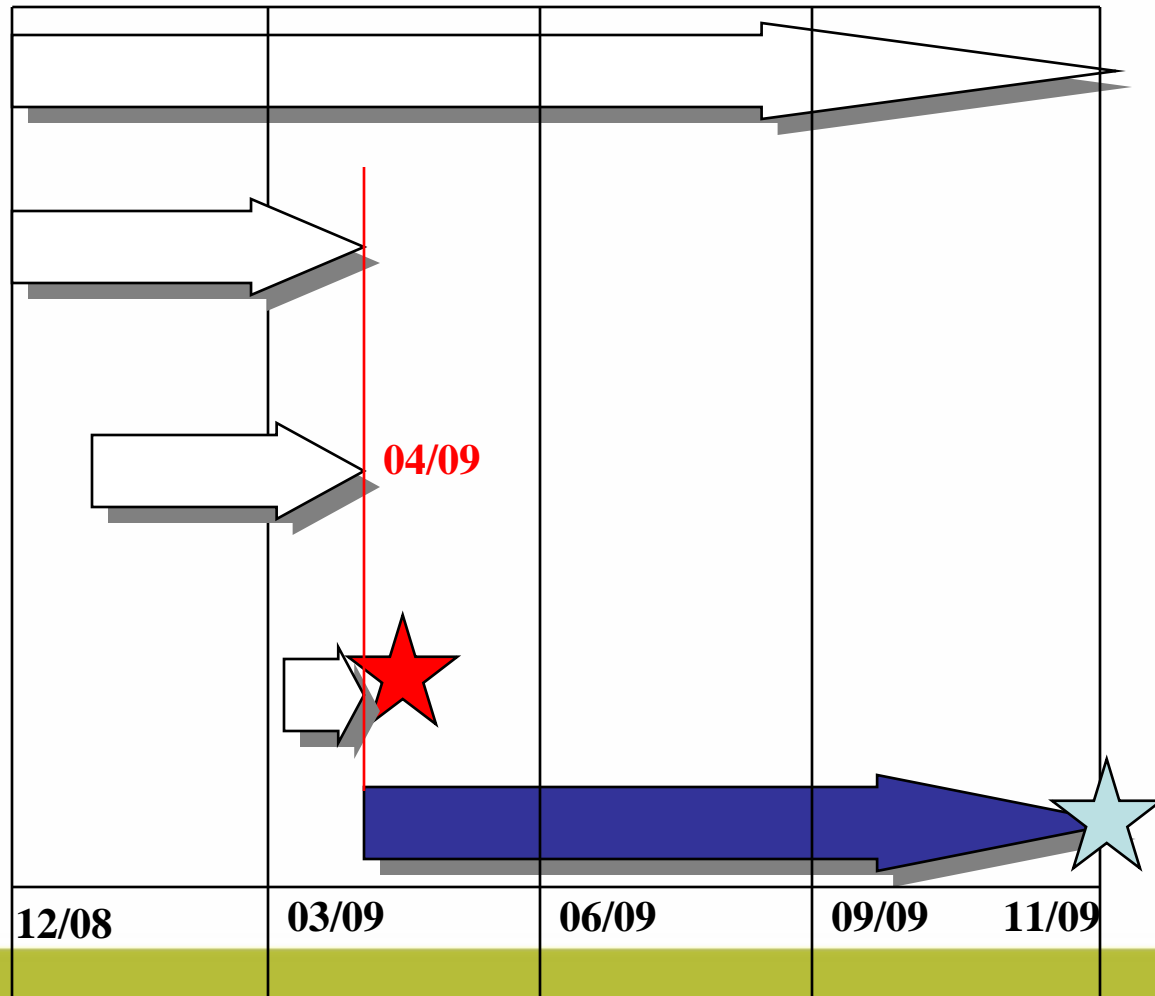
*Community Input*

*Research, analysis &  
GIS simulations*

*Develop potential  
options*

*Finalize & Adopt*

*Begin  
Implementation*



# Process and Schedule Moving Forward

Apr 14, 2009	Board of Education Meeting: <i>First Reading of Resolution for new Student Assignment System</i>
April 28, 2009	Board of Education Meeting: <i>Adoption of new Student Assignment System</i>
May – Oct 2009	Operational Planning, Implementation, Training, and Education
Nov 2009	Begin assignment cycle for SY 2010-2011

# **Demonstration of Geographic Information System (GIS)**

# Questions and Discussion

